



Temple
University

University Housing
and Residential Life

HOUSING SELECTION GUIDE

FALL 2024

LIVING ON

CAMPUS NEXT YEAR

For *New Students* First Year & Transfer

FALL 2024

housing selection **PROCESS**



1300

**Where will you
live next year?**



**How the housing
selection works**



**5 things to
know about the
housing contract**



We encourage all students to consider Temple's on-campus housing experience. The housing selection process is online and makes it easy for students to select their own room. Students will have the opportunity to perform roommate matching and select roommates, request specific housing options, consider renter's insurance, and select a meal plan.

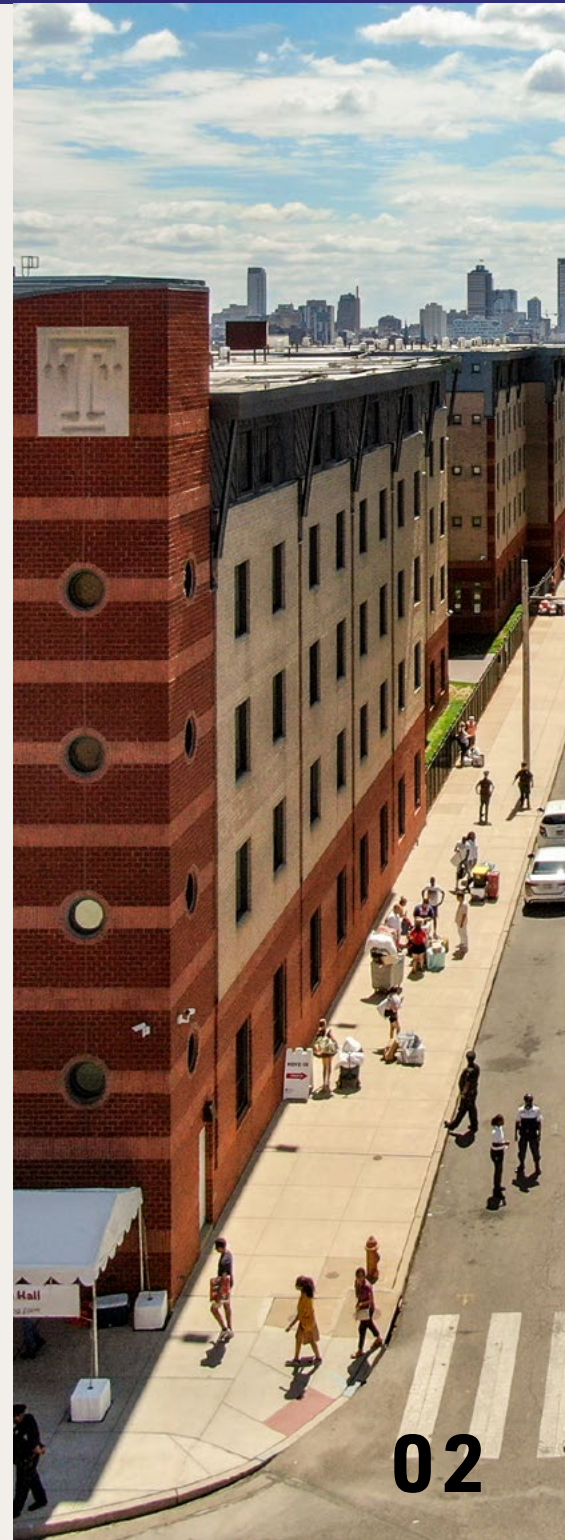
The Housing Selection Process works on a first-come, first-served basis. The earlier a student submits their deposit, the better the chances of being able to choose a preferred room type or location.

The Fall 2024-Spring 2025 housing selection process will take place for returning students the week of **May 13, 2024**.

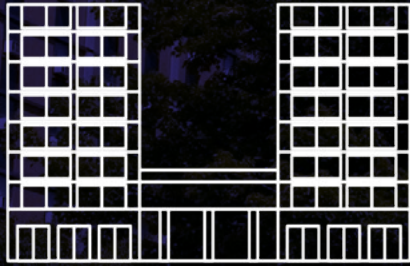
New students who submit their deposit and complete their application prior to **May 1** will be eligible to receive a timeslot to choose your room. Students who submit a deposit after May 1 will be eligible to choose a room after the timeslots have concluded.

To be eligible to live on campus, please note the following items included in the Housing License:

1. You are agreeing to live in housing for the full academic year (August-May).
2. You must be registered for at least 12 credits by the start of the semester and no later than the end of Drop/Add to remain in University housing.
3. All new students, including transfer students, are required to have a meal plan. The minimum meal plan that can be selected is 10 meals per week.
4. You are able to remain on-campus during University break periods, but must agree to complete a Housing Extension request on the My Housing portal by the provided deadlines and are subject to any applicable fees.
5. By agreeing to the housing license, you are also agreeing to Temple University's Code of Conduct and the UHRL Community Living Standards document. These documents are available on our website and we encourage students to review these policies.



the three easy stages of **HOUSING SELECTION**



Johnson & Hardwick

STAGE **01**

submit the
housing deposit



STAGE **02**

complete the
housing application



STAGE

03

select your
housing and meal plan



COMPLETE THE HOUSING APPLICATION

Starting on Monday, December 11, 2023, New Students will be able to begin the housing application process.

To start the housing application process, students will log into **MyHousing** via the **TUportal**.

- Review and agree to the Terms and Conditions of the housing license; students under 18 years of age will be required to forward this to their parents or legal guardian for approval.
- Consider opting into the Grad Guard Renter's Insurance Program.
- Students will create a **profile** for roommate matching.
- Students can form **roommate groups** and engage in **roommate matching**.
- Students will be able to review and confirm **emergency contact** information in the system.

submit the HOUSING DEPOSIT

Deposit Timeline

New and Transfer Students:

May 1, 2024 is the Admissions deposit deadline, not the housing deposit deadline. As noted, housing is on a first-come, first-served basis so earlier paid deposits receive preference during the Online Housing Selection Process.



Deposit

Log into TUportal, and access MyHousing.

Click on the Housing Application, and complete the Housing Application steps listed above.

New Students will complete the Tuition and Housing Deposit Form on the "Next Steps" Channel in TUportal to submit housing deposits. Students are prompted to pay tuition and housing deposits together.

Temple University's Bursar's Office manages the process of collecting deposits. For questions or concerns pertaining to payments and methods of payments, please contact the University's Bursar Office.

Bursar's Office
1803 North Broad Street
w Hall, Room 115
Philadelphia, PA 19122
bursar@temple.edu



Questions about your financial aid for next year?

Student Financial Services

1801 North Broad Street
Conwell Hall, Ground Floor Philadelphia, PA
19122

sfs.temple.edu

Office Hours

For an appointment with the SFS office visit,
<https://sfs.temple.edu/about/appointments>

select your **HOUSING & MEAL PLAN**

The Fall 2024-Spring 2025 housing selection process will take place for new students the week of **May 13, 2024**. The Housing Selection Process works on a first-come, first-served basis. The earlier a student submits their deposit, the better the chances of being able to choose a preferred room type or location.

New students who submit their deposit and complete their application prior to May 1 will be eligible to receive a timeslot to choose your room. Students who submit a deposit after May 1 will be eligible to choose a room after the timeslots have concluded.

A timeslot is the specific date and time your room selection will begin. Your timeslot will end when your room assignment is finalized or when the room selection process closes. Your timeslot will be shared the week of May 5.

If you are in a roommate group, identify who has the first timeslot and designate that person as the group leader. Once your timeslot occurs, the group leader will choose a room assignment and add everyone to the room.

Room Selection Instructions

When it is your turn to choose your room, go into MyHousing and navigate to your 2024-2025 application. On your quick links page, you will see a link for Room Selection.

You will be able to review available spaces and search by building or room type

You will also be able to see how many spaces in each apartment are available. If you are the group leader for a roommate group, you should only consider rooms that have enough spaces to fit your group.

Once you identify a room that you would like to choose, add it to your cart. The room will remain in your cart not visible for other students to select for 10 minutes while you finalize your choice.

On the next page, if you are in a roommate group, you will need to make sure to add each member of your group to a specific space in the apartment.

Review the final details on the last page and click "confirm". This is the final page- once you click confirm, you cannot go back.

Congratulations! You will receive a confirmation email and each member of your group will also receive a confirmation.

Meal Plan details can be found at : temple.campusdish.com

Watch Room Selection Video [here](#):

IMPORTANT DATES: WHEN ONLINE HOUSING SELECTION OPENS

NEW STUDENTS

Monday, May 13, 2024



roommate MATCHING



MEET YOUR MATCH

Finding a roommate can be one of the most challenging parts of the housing process; however, we pride ourselves on offering tools to help you succeed. We encourage you to engage and connect with your peers to help inform your choice in selecting the right individual(s) for a successful roommate experience. In your housing application, complete your profile which will allow you to search and match with other students.

After your housing application and deposit have been submitted, go back to your Academic Year housing application for 2024-2025. Navigate to the end and you will see a quick links page and a link for Roommate Matching will be visible. Roommate Matching will be available after your application has been submitted and throughout the housing selection process.



Students are encouraged to participate in Roommate Matching prior to the start of Housing Selection which begins on May 13, 2024.



check out the **NEW ROOMMATE MATCHING GUIDE**

[CLICK HERE](#)

watch the **NEW ROOMMATE MATCHING VIDEO**



[CLICK HERE](#)

find

YOUR SPACE



Being on campus, in the thick of it all, is one of the most exciting parts of moving away to college. There are so many opportunities for cultural, recreational, social, and academic growth on the widespread, metropolitan Temple campus. It's good to know where to get started, from which hall you'll live in to what to pack to who can help you figure it all out.

While at Temple, you'll have the option to live on-campus all four years, though housing is not guaranteed any time. If you are a first year student, you will be able to choose from seven residence halls, each unique in its own way. Traditional halls consist of a room off of a shared hallway with communal, gendered bathrooms on each floor. Suite style residence halls include an entry way, private bathrooms, and separate bedrooms. Apartment style residence halls include common spaces, in-unit bathrooms, and kitchens.

We encourage students visit our residence hall page online to learn more about these buildings.



360 degree VIRTUAL TOUR



Temple University's Housing [360 Degree Virtual Tour](#) is a unique, one of kind virtual experience created to help students and family members become familiar with on-campus housing.

Every year, the department sponsors a Showcase Your Space room decorating contest during which we document the great use of our students room space. Over the years, we've captured all buildings and unit types to illustrate the great space on campus and the pride our students have in showcasing their rooms. We hope this provides a good sense of what it's like to live on campus. Of course nothing beats seeing rooms in person and we welcome you to visit us during Experience Temple Days in the Spring.

The Virtual Tour program has been so popular on campus, other units such as our Student Center Operations and Dining Services have asked to participate in the Virtual Tour and their respective spaces can also be viewed in the [360 Degree Virtual Tour player](#).

Traditional

| Johnson & Hardwick Hall

Suite Style

| 1300 Residence Hall (1st, 2nd, 3rd Floor only)

| 1940 Residence Hall

| James S. White Hall

Apartment Style

| Mitchell and Hilarie Morgan Hall

TAKE A LOOK INSIDE OUR RESIDENCE HALLS



Temple University

SPECIALTY HOUSING

ABOUT SPECIALTY HOUSING

Temple strives to accommodate our students' residential experience in a way that best serves their educational and cultural experiences. Students with special interests on campus have their choice of four types of unique living communities: Living Learning Communities, housing for students with disabilities, Gender Inclusive Housing, and Student Athletic Housing. A separate request and approval process is required for all specialty housing with the exception Athletic Housing. All students interested in specialty housing are required to pay the \$250 housing deposit before they can submit.

LIVING LEARNING COMMUNITIES (LLC)

Temple University is proud to offer almost a dozen different kinds of Learning Communities for new students.

To learn more about the LLC programs, visit the Living Learning Community website at housing.temple.edu.

Students approved for an LLC Program have priority access and will be able to self-select their housing assignments prior to the open of the online housing selection process.



THE LIVING LEARNING COMMUNITY PROGRAM AT

Temple University

OPPORTUNITIES FOR SUCCESS

New Students can begin submitting their housing applications and deposits at 10:00 a.m. on Monday, December 11, 2023. Students will not be permitted to submit deposits earlier for the Fall 2024 housing process. Please note that students should not submit a deposit before this date and time as this could create delays for you in securing access to the fall housing selection process if you attempt to submit deposits early. No exceptions will be made to allow for earlier access.

LLC PROGRAM GOALS

- Develop partnerships with faculty and staff
Dialogue with peers about academic and social issues outside the classroom
- Increase satisfaction with overall academic experience and persist at a higher rate
- Enhance students' connection with Temple University and the city of Philadelphia



Learn more online at:
<https://housing.temple.edu/campus-living/living-learning-communities>



how to request an **LLC PROGRAM & SELF SELECT YOUR SPACE**



Living Learning
Community
Room Selection

IMPORTANT INFORMATION

In order for your Living Learning Community request to be officially submitted, you must agree to all program requirements of the Living Learning Community.

Regardless of when you submit your Living Learning Community request, housing assignments are on a first-come, first-served basis according to your housing deposit date.

Following an approval, students will receive an automated e-mail signifying that you can now self-assign your space upon the space suggestions of Living Learning Community administrators.

Roommate requests can be considered for students accepted into the program; otherwise you will need to randomly assign with another Living Learning Community student.

HOW TO SUBMIT YOUR REQUEST

- 1** Pay the \$250 Housing deposit, and allow at least one (1) business day for your deposit transaction to process.
- 2** Go to MyHousing to start the request process.
- 3** Select the Living Learning Community Request after you complete your housing application and submit your housing deposit.
- 4** Your request will be reviewed and you will receive an email notification on whether or not you have been accepted into the LLC program.
- 5** After this approval, you will be given access to self select your space in the approved LLC.

SPECIALTY HOUSING

accommodations for **STUDENTS WITH DISABILITIES**



Housing for
Students with
Disabilities

Students can request accommodations if they have been approved by the Office of Disability Resources and Services. To be considered for these accommodations, complete the Housing for Students with Disabilities Request on the MyHousing website in the 2024-2025 Academic Year Housing Application. Please note that as part of the process for becoming registered with the Office of Disability Resources and Services (DRS), students will need to submit a copy of their medical documentation. For more information, visit housing.temple.edu and click on Campus Living tab.

Contact Disability Resources
and Services at 215-204-1280
for more information.

IMPORTANT DATES FOR SPECIALTY HOUSING

NEW STUDENTS

Monday
January 29, 2024

Request Process Opens
for New Students

Wednesday
May 1, 2024

Deadline to apply prior to
opening of General Housing
Selection Process

gender inclusive HOUSING



WHAT IS GENDER INCLUSIVE HOUSING?

Gender Inclusive Housing (GIH) allows students the option to live in the same bedroom and share bathroom with another student, regardless of biological sex, gender expression, gender identity, or sexual orientation. There are select GIH rooms available in all new student buildings.

To be considered for GIH, students will need to submit a GIH application in MyHousing beginning on March 1. Following an approval, students will receive an email confirmation and you can proceed to select your GIH room.

Roommate matching for GIH students will be available between April 1-May 3, 2024. If you aren't part of a roommate group, you can randomly assign with another LLC student.

New students should submit their request for GIH no later than Friday, May 3, 2024.



Gender
Inclusive
Housing



Students are encouraged to review details about the GIH option at:
<https://housing.temple.edu/campus-living/gender-inclusive-housing>

2024-2025 DATES & DEADLINES

MONDAY, DECEMBER 11, 2023

Housing Application and Deposit Process Opens for Fall 2024 Housing Selection

Students can begin submitting their housing applications and deposits at 10:00 a.m. on Monday, December 11, 2023. Students will not be permitted to submit deposits earlier for the Fall 2024 housing process. Please note that students should not submit a deposit before this date and time as this could create delays for you in securing access to the fall housing selection process if you attempt to submit deposits early. No exceptions will be made to allow for earlier access to the deposit process.

DEC

11

MONDAY, DECEMBER 11, 2023

Housing Application and Deposit Process Opens for Fall 2024 Housing Selection beginning at 10:00am

JAN

29

MONDAY, JANUARY 29, 2024

New students can begin roommate matching!

Application for Housing for Students with Disabilities opens

MAR

01

FRIDAY, MARCH 01, 2024

Application for Living/Learning Community (LLC) programs and Gender Inclusive Housing (GIH) opens

APR

01

MONDAY, APRIL 01, 2024

LLC and GIH roommate matching available

APR

22

MONDAY, APRIL 22, 2024

LLC and GIH room selection open, closes May 3

MAY

01

WEDNESDAY, MAY 01, 2024

Commitment deadline for the University Deadline to complete application for Housing for Students with Disabilities New students who submit their deposit and complete their application prior to or on this date will be eligible to receive a timeslot for room selection to choose their room the week of May 13.

MAY

06

WEEK OF MAY 06, 2024

Timeslots will be shared via TUMail

MAY

13

WEEK OF MAY 13, 2024

Returning room selection timeslots occur!

After May 20, 2024 - New student room selection open access for any new student to choose their room as availability allows, regardless of deposit date.

15

cancellation DATES



If you need to cancel your housing, please be sure to adhere to these cancellation dates.

**BEFORE
MAY 15**

No financial penalty

**MAY 16 –
JULY 16**

Forfeit the **\$250**
housing deposit

**JULY 17–
AUG 16**

Forfeit the **\$250**
housing deposit
& charged a **\$500**
cancellation fee

**AFTER
AUG 16**

Forfeit the **\$250**
housing deposit
& charged a **\$750**
cancellation fee



**CHECK OUT OUR VIDEOS
ON TEMPLE HOUSING
YOUTUBE CHANNEL!**

[**CLICK HERE**](#)

1910 Liacouras Walk
Suite 201-301
Philadelphia, PA 19122-6027
Phone: 215-204-7184, option #2
Fax: 215-204-3261
housing.temple.edu