



Temple
University®

University Housing
and Residential Life

HOUSING SELECTION GUIDE

FALL 2024

LIVING ON
CAMPUS NEXT YEAR

For Graduate Students

welcome to GRADUATE HOUSING

On behalf of the University Housing and Residential Life staff, we welcome you to campus life. Our staff in Graduate Housing works hard to develop a supportive living environment that promotes academic success and personal growth.

Temple is proud to offer housing exclusively for graduate and professional students located at the Podiatry Campus on Cherry Street in Center City Philadelphia.

Besides the easy application process, there are many other benefits to Graduate Housing. They include:

- **An environment well suited for a busy schedule. All apartments in graduate housing offer single occupancy or private bedrooms and are furnished**
- **Opportunity for 10-12 month contract options**
- **A community environment where opportunities to study and socialize with others are available**
- **On site support staff and maintenance team**
- **24 hour front desk security**
- **A convenient location at the Podiatry Campus on Cherry Street with easy access to many different dining, social, and cultural experiences that Philadelphia has to offer**
- **Easy access to Septa stop right across the street for navigating the city**
- **Utilities are included in the cost of housing. Housing is billed to your student account and is paid on a semesterly basis**
- **On-site laundry facility and mail service**

We hope graduate housing will be a good fit for you! Whether you are a new graduate student or returning to graduate housing for another year, we appreciate your interest and are happy to help with any questions or concerns you may have.



Deja Shelton

Housing Operations department
(Applications, Assignments, Billing,
Room Change, Cancellations)

housing@temple.edu

(215) 204-7184 Option #2

Juanita Lavalais

Resident Director (Move-in, Early
Arrival, Check-out, Roommate
Issues, Amenity concerns)

juanita.lavalais@temple.edu

(215) 777-5758

learn more about **GRADUATE HOUSING**



If you need to navigate to main campus, public transportation is easily accessible.

- Septa Bus (#47)
- Market Frankford Line train (MFL), travel to 8th and Market
- Jefferson Station Regional Rail
- Broad Street Line (BSL) Subway to Chinatown



This seven-story apartment building is located on the corner of Eighth and Cherry Streets on the Temple University School of Podiatric Medicine Campus in Center City. Graduate housing offers the experience of campus living for 127 professional and graduate students with the benefits of city life. Many of Philadelphia's finest shops, cultural and historic attractions are within easy walking distance of the complex.

Utilities are included in the room rate: electric, wifi, heat, air conditioning, water, sewer, and trash. There is a parking lot next to graduate housing, but this lot is not owned or operated by Temple University. For more information about purchasing a convenient parking pass, please contact the Resident Director for Graduate Housing, Juanita Lavalais.

Other features/amenities of graduate housing include:

- Social lounge on the first floor with pool table
- TV lounge on the first floor
- Vending machines on the first floor
- Elevator
- Fitness center and computer lab conveniently available in the Podiatric Medicine building next door.
- Library and study spaces available in the Podiatric Medicine building next door or at the TU Center City campus building (about a 20 minute walk)
- Opportunity for storage cubicle space if a returning resident

FOR PROSPECTIVE RESIDENTS AND CURRENT RESIDENTS

IF YOU ARE NEW TO GRADUATE HOUSING:

Congratulations on your acceptance to Temple University! Thank you for your interest in graduate housing. Once you have confirmed your acceptance to Temple, you will gain access to TUPortal which is your gateway to information.

Once you sign in to TUPortal, search for "MyHousing" to begin your housing application. All students who would like housing need to complete an application and submit a \$250 housing deposit. Keep reading for more information about how to choose your new home!



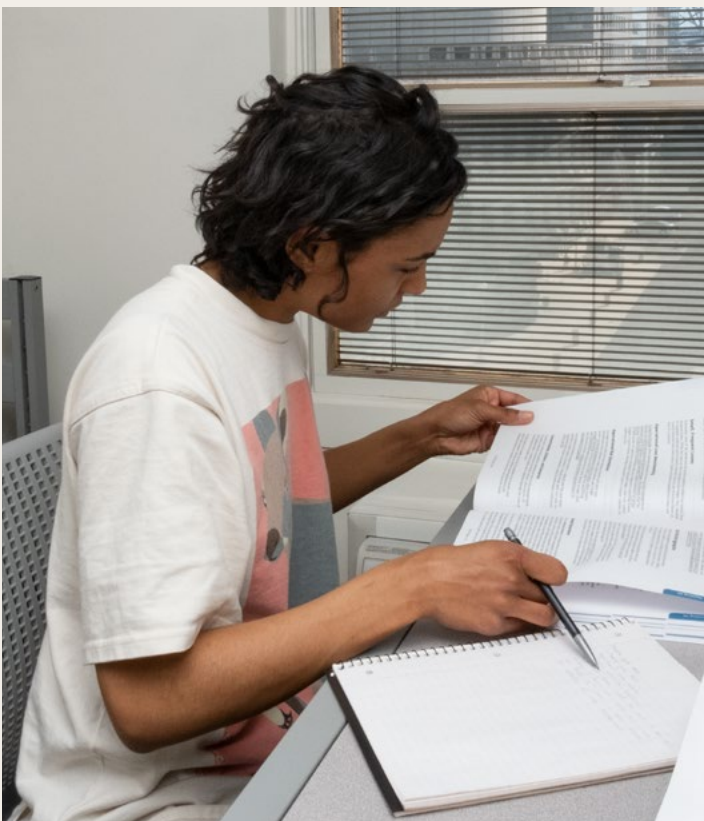
ALREADY A RESIDENT? RENEW FOR NEXT YEAR!

During the spring semester, current students residing in graduate housing have the opportunity to secure either their current room or a new room prior to room selection opening for new students.

To be eligible, students need to be a current resident in graduate housing, be in good financial standing with the University, and complete a housing application/deposit for the following academic year on MyHousing.

Residents who meet these requirements will receive more information about how to participate in room selection for the following year.

Spaces will go quickly, so act fast to secure your room for next year!



FLOOR PLANS

Note: 2024-2025 room rates will be updated and published during the Summer 2024.

Single Studio Apartments

Apartments ending in x07

Efficiency style with combination living room/kitchen/bedroom

(2023-24 rate per semester \$6,817)



One Bedroom Apartments

Apartments ending in x02, x11

Living room/dining room 10x19'

Bedroom (2023-24 rate per semester \$7,632)



Two-bedroom Apartments

Apartments ending in x04, x05, x08, x09, x10

Living room/dining room 10x16'

*Living room for these units are either on the left side or the right of the unit.

Bedroom A- Single Standard (2023-24 rate per semester \$5,373)

Bedroom B- Single Standard (2023-24 rate per semester \$5,373)

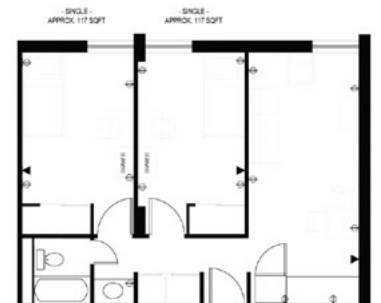


Apartments ending in x03 except 303

Living/dining room 9x19'

Bedroom A- Single Large (2023-24 rate per semester \$5,795)

Bedroom B- Single Large (2023-24 rate per semester \$5,795)



Apartments ending in x01, x12

Living/dining room 12x19'

*Living room for these units are either on the left side or the right of the unit.

Bedroom A- Deluxe (2023-24 rate per semester \$6,134)

Bedroom B- Single Large (2023-24 rate per semester \$5,795)



FLOOR PLANS CONT.

Three-bedroom Apartments

Living/dining room 12x16'

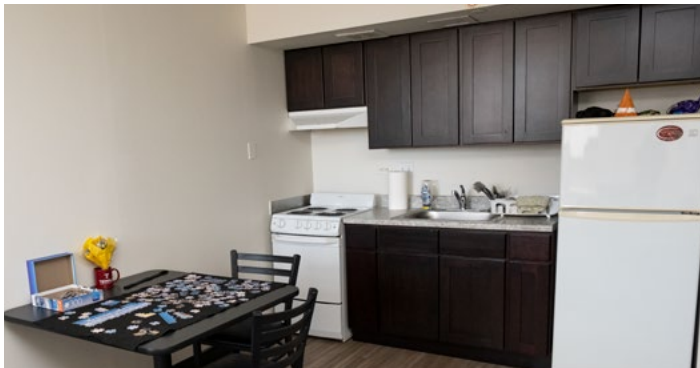
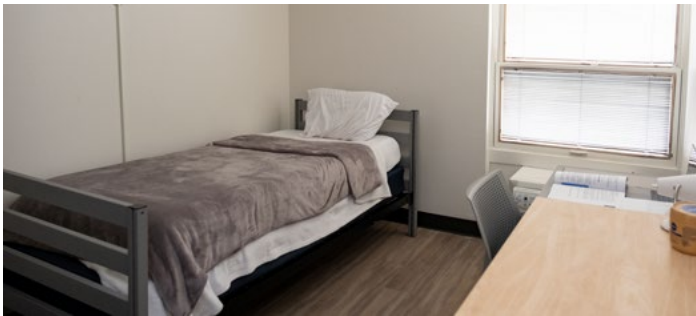
Bedroom A- Single Standard (2023-24 rate per semester \$5,373)

Bedroom B- Single Standard (2023-24 rate per semester \$5,373)

Bedroom C- Single Standard (2023-24 rate per semester \$5,373)



PHOTOS



selection process of **GRADUATE HOUSING**



Room Renewal Process for Returning Graduate Students

(Select the same room):

For current residents who wish to remain in their same room for next year, you will use the "room retention" feature on MyHousing to re-select your room.

Room Renewal will take place from March 1-March 10, 2024.

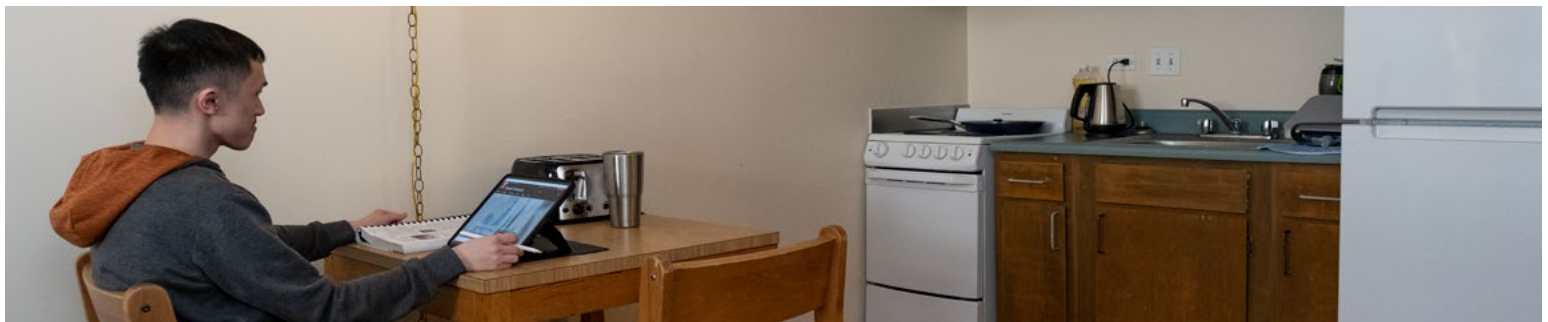


Room Selection Process for Returning Graduate Students

(Select a different room):

For current residents who wish to return to graduate housing, but choose a different room for next year. You will use the room selection page on MyHousing to re-select your room.

Room Selection will take place from March 11-March 22, 2024.



General Room Selection for New Graduate Students

(March 25-June 28, 2024)

Once your housing application and deposit have been completed successfully on MyHousing, you will be able to select your room between the above dates. If you need assistance with securing a room after June 28 please contact the housing office at housing@temple.edu

Apartments/rooms are available on a first-come, first-served basis. The earlier you submit a deposit, the better your chances are to receive your preferred room type or location.

accommodations for STUDENTS WITH DISABILITIES



Housing for
Students with
Disabilities

Students can request housing accommodations if they have been approved by the Disability Resources and Services. To be considered for these accommodations students will need to complete two steps:

Complete the Housing for Students with Disabilities Request on MyHousing in the 2024-2025 Academic Year Housing Application. For questions about housing accommodations, reach out to housing@temple.edu.

Register with the Disability Resources and Services (DRS). Students will need to submit a copy of their medical documentation. For questions about registering or submitting documentation, reach out to drs@temple.edu.

Graduate students who submit all documentation and are approved by the priority deadline of February 26, 2024 will receive a housing assignment that meets their approved accommodation. If an accommodation cannot be met, a student will be approved for cancellation. Requests submitted after the priority deadline will still be reviewed, but will be subject to availability.

Contact Disability Resources and Services at 215-204-1280 for more information.

MOVE IN, SUMMER HOUSING, & CANCELLATION POLICIES

MOVE IN:

Graduate students can begin moving in on August 1, 2024. You will receive information via your TUMail account in early July regarding choosing your specific move in day and time. You will also be notified about any other steps you will need to take prior to move in. If early arrival is needed, please contact housing@temple.edu. Early arrival requests are reviewed on a case-by-case basis.

SUMMER HOUSING:

Current residents who renew for the following year are eligible for a 12 month contract and to remain in graduate housing for the summer. Current residents who do not renew are eligible for an 11 month contract to remain in graduate housing through the end of June. Interested residents need to complete the Graduate Summer Intent form on MyHousing to apply for these options. Please note, summer housing is not included in the academic year rate and will come at an additional cost.

CANCELLATION POLICIES:

If you decide to cancel your housing application or room assignment, you must complete a cancellation request on MyHousing.

Prior to May 15, 2024	Students can cancel with no fee and no penalty
May 16-July 16, 2024:	Students will forfeit their \$250 deposit
July 17-August 1, 2024 (prior to move in)	Students will forfeit their \$250 deposit and be charged an additional \$500 cancellation fee
After the contract begins on August 1st, 2024	Students are held to the financial terms of the contract. Cancellation requests are reviewed on a case-by-case basis and may not be approved

the six easy stages of **HOUSING APPLICATION**

STAGE

01

Review and agree to the Terms and Conditions of the housing license.



STAGE

02

Students will be able to review and confirm emergency contact information in the system.



STAGE

03

Consider opting into the Grad Guard Renter's Insurance Program.



STAGE

04

Submit your \$250 housing deposit.



STAGE

05

Meal plan preference - optional! You can add a meal plan here, but please note this is not required for graduate students and meal plans can only be used on main campus.



STAGE

06

Complete your student profile which asks about your living style and will be visible to your roommate(s).






room renewal/selection **INSTRUCTIONS**

ROOM RENEWAL:

- The Fall 2024-Spring 2025 housing selection process will take place for graduate students beginning in March 2024. The Housing Selection Process works on a first-come, first-served basis. The earlier a student submits their deposit, the better the chances of being able to choose a preferred room type or location.
- Current residents who wish to renew and keep their current room assignment can do so on MyHousing between March 1-10, 2024 using the room retention feature.
- Between March 1-10, 2024 go into MyHousing and navigate to your 2024-2025 application. On your quick links page, you will see a link for Room Retention.
- On the next page, you will see your current room assignment and be able to confirm that you would like to renew that space for the following year. Once this is submitted, congratulations! You will receive a confirmation email.

ROOM SELECTION:

- Current residents who wish to renew but change their room assignment for next year can do so on MyHousing between March 11-22, 2024. New residents can choose their room between March 25-June 28.
- If you are in a roommate group, designate a group leader. The group leader will choose a room assignment and add everyone to the room during room selection. For more information about roommate matching, go to housing.temple.edu.
- If you are not in a roommate group, you are able to proceed through selection on your own during the indicated dates.
- When it is your turn to choose your room, go into MyHousing and navigate to your 2024-2025 application. On your quick links page, you will see a link for Room Selection.
- You will be able to review available spaces within graduate housing. You will also be able to see how many spaces in each apartment are available and see who has already selected in that apartment.
- Once you identify a room that you would like to choose, add it to your cart. The room will remain in your cart not visible for other students to select for 10 minutes while you finalize your choice.
- On the next page, if you are in a roommate group, you will need to make sure to add each member of your group to a specific space in the apartment. If you are selecting on your own, add yourself to whichever bedroom is available.
- Review the final details on the last page and click "confirm". This is the final page- once you click confirm, you cannot go back.
- Congratulations! You will receive a confirmation email and each member of your group will also receive a confirmation (if applicable).



2024-2025 DATES & DEADLINES

THURSDAY, FEBRUARY 1, 2024

Housing Application and Deposit Process Opens for Fall 2024 Graduate Housing Selection

Students can begin submitting their housing applications and deposits at 10:00 a.m. on Thursday, February 1, 2024. Students will not be permitted to submit deposits earlier for the Fall 2024 housing process. Please note that students should not submit a deposit before this date and time as this could create delays for you in securing access to the fall housing selection process if you attempt to submit deposits early. No exceptions will be made to allow for earlier access to the deposit process.



1910 Liacouras Walk
Suite 201-301
Philadelphia, PA 19122-6027
Phone: 215-204-7184, option #2
Fax: 215-204-3261
housing.temple.edu

FEB

01

THURSDAY, FEBRUARY 1, 2024

Application opens

Roommate matching available
(if desired)

MAR

01

FRIDAY, MARCH 1, 2024

Room renewal begins for
returning residents

MAR

11

MONDAY, MARCH 11, 2024

Room selection begins for returning
residents

MAR

25

MONDAY, MARCH 25, 2024

Room selection begins
for new residents

MAY

15

WEDNESDAY, MAY 15, 2024

Last day to cancel without fee
or penalty